

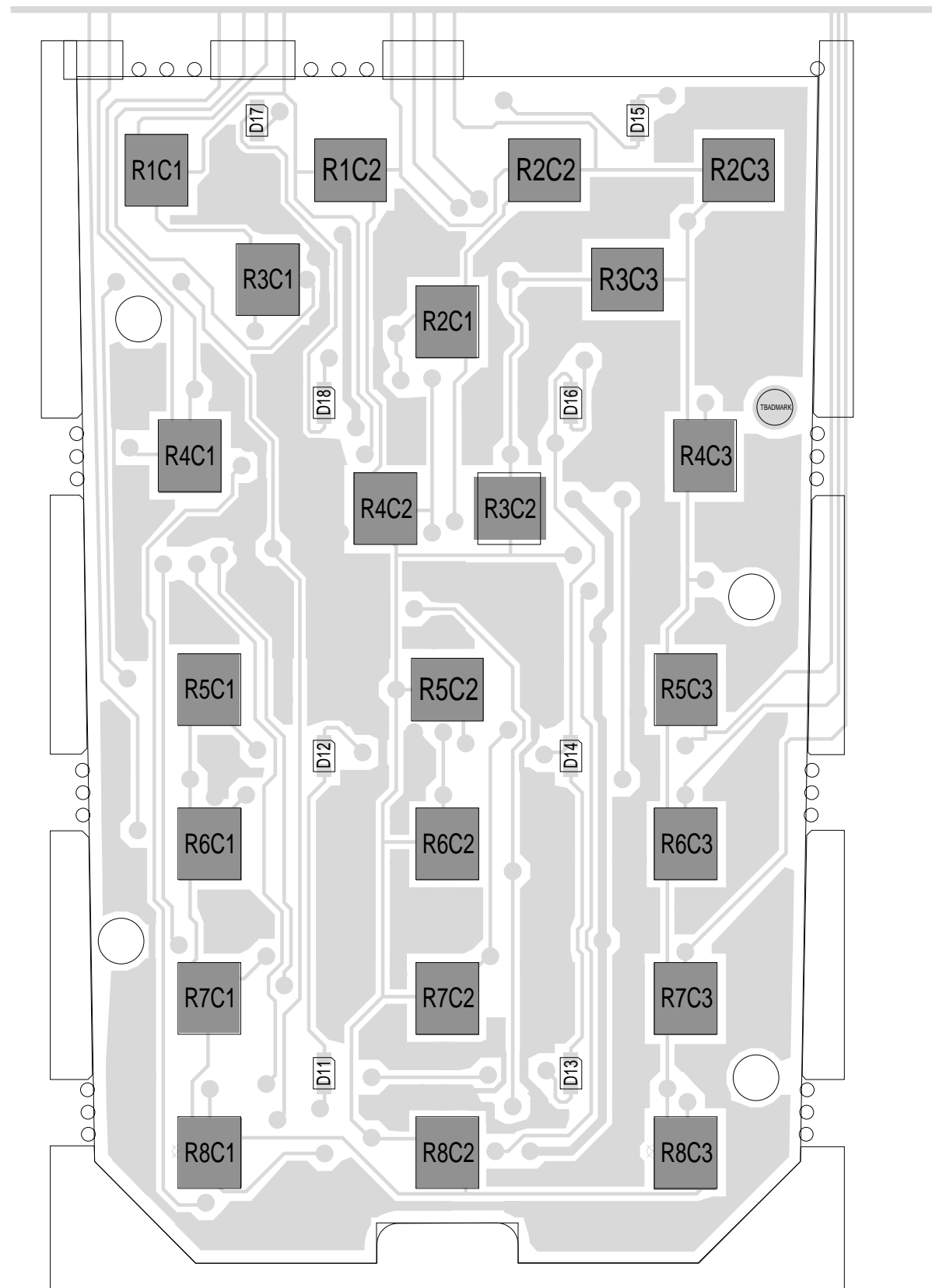
22WAY SIDE ENTRY FLEXI BRD SKT  
 Pins 4,6,7,14,15,19,20,21,22 are No-Connect

Pins 1,2 are No-Connect  
 14WAY SIDE ENTRY SKT

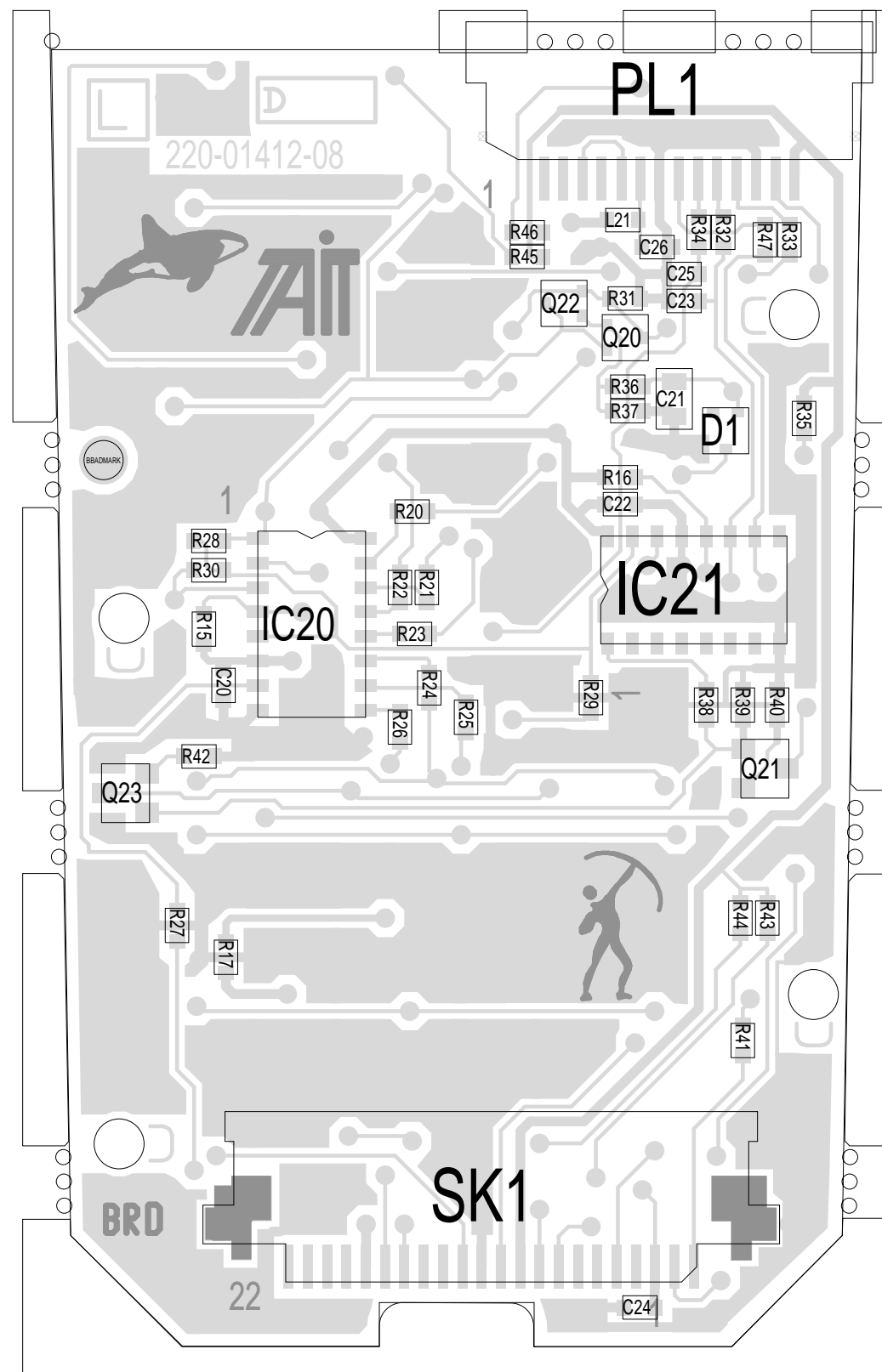
08A	FIT 4X4K7 & 4X0603C'S & L21	CCO No.1412-001	TS		14-10-99
7B	CHANGED RES-V TO BALANCE LIGHT		BRD		10/11/98
7A	ADDED LIGHT SPREADING LEADS		BRD		28/08/98
6A	ADDED 47K RES TO RESET,R41		BRD		21/07/98
5A	ADDED BAV99W		BRD		12/06/98
4A	CHANGED RES VAL & PLACED 2 PARTS		BRD		08/05/98
3A			AD		
2A	IMPROVEMENTSMADE		AD		31/10/97
1A	DELETED EL CIRCUITRY		AD		22/08/97
REV/ISS	AMENDMENTS	DRAWN	CHKD	D.O.	APVD DATE

© TAIT ELECTRONICS  
 ORCA KEYPAD INTERFACE  
 ORCAKEYPAD

IPN: 220-01412-08  
 DESIGNER: ORCA  
 FILE NAME: BRD/TS  
 FILE DATE: 141208A  
 ISSUE: 8A  
 NO. SHEETS: 1



TAIT ELECTRONICS	IPN:	ISS:	ID:	DATE:
	220-01412-08	-08	1.TA	15 Oct 1999
KEYPAD ORCA PCB LAYOUT - TOP SIDE				



TAIT ELECTRONICS	IPN:	ISS:	ID:	DATE:
	220-01412-08	-08	2.BA	15 Oct 1999
KEYPAD ORCA PCB LAYOUT - BOTTOM SIDE				